

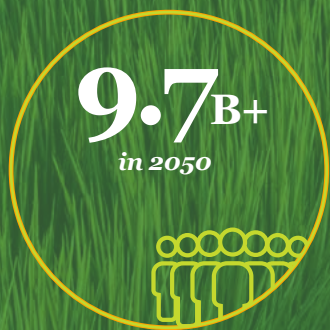


# Investing in U.S. *farmland*

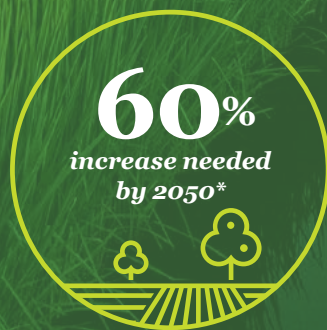
# How does direct investment in farmland provide diversification, inflation protection, and return potential?

*By 2050, the world's farmland will likely have to support a population of more than nine billion people—an increase that will require a 60% boost in agricultural productivity.*

GLOBAL POPULATION GROWTH



AGRICULTURAL PRODUCTION NEEDED



Sources: World Bank, January 2022 and Food and Agriculture Organization of the United Nations (FAOSTAT).  
\*Compared to FAO 2005/07 base year measurement

OPINION PIECE. PLEASE SEE IMPORTANT DISCLOSURES IN THE ENDNOTES.  
NOT FDIC INSURED | NO BANK GUARANTEE | MAY LOSE VALUE

*At the same time, the developing world's middle class is likely to continue to upgrade its diet, consuming more protein, and subsequently increasing pressure on global grain supplies. Moreover, industrialization and urban development continue to encroach upon the world's finite farmland resources. As water becomes an increasingly scarce resource, agricultural regions with sustainable water supply will become implied exporters of water by virtue of their crop production.*

*For these reasons, direct investment into global agricultural land presents an increasingly compelling investment opportunity, as it offers a potentially steady return on investment, low correlation to other assets and a hedge to inflation.*

# Investing in U.S. farmland

## Supply and demand fundamentals are positive

Investing in agricultural land is a fundamental way to benefit from the growing worldwide demand for food. We believe the case for investing in this asset class is not only strong now, but becoming stronger, due to several positive fundamental factors.

## Growing populations will require more food

According to the UN, the world's population is currently expanding by over 63 million people per year. By 2050, agricultural producers will have to support a population of more than 9.7 billion people.<sup>1</sup> The Global Harvest Initiative 2023 GAP report estimates that to meet demand by 2050, agricultural producers would have to double their output from 2010 levels. This will require an average annual growth rate of at least 2.03% in total factor productivity (TFP)—or the output per unit of total resources employed in production.<sup>2</sup> In comparison, the USDA's Economic Research Service data found that between 2002–2022 global agricultural TFP rose by an average annual rate of 1.40%.<sup>3</sup> This potential short-fall is driven primarily by increasing constraints in developing countries such as China and Brazil. However, as developing nations face constraints, including China's limited clean water supply, significant challenges remain in order to sustain the required productivity growth. In the face of continuing population growth and limited

land base, farms globally must continue to do more with the same resources. As a result, there is likely to be continued pressure on prices for food-producing land.

## Developing countries continue to increase protein consumption

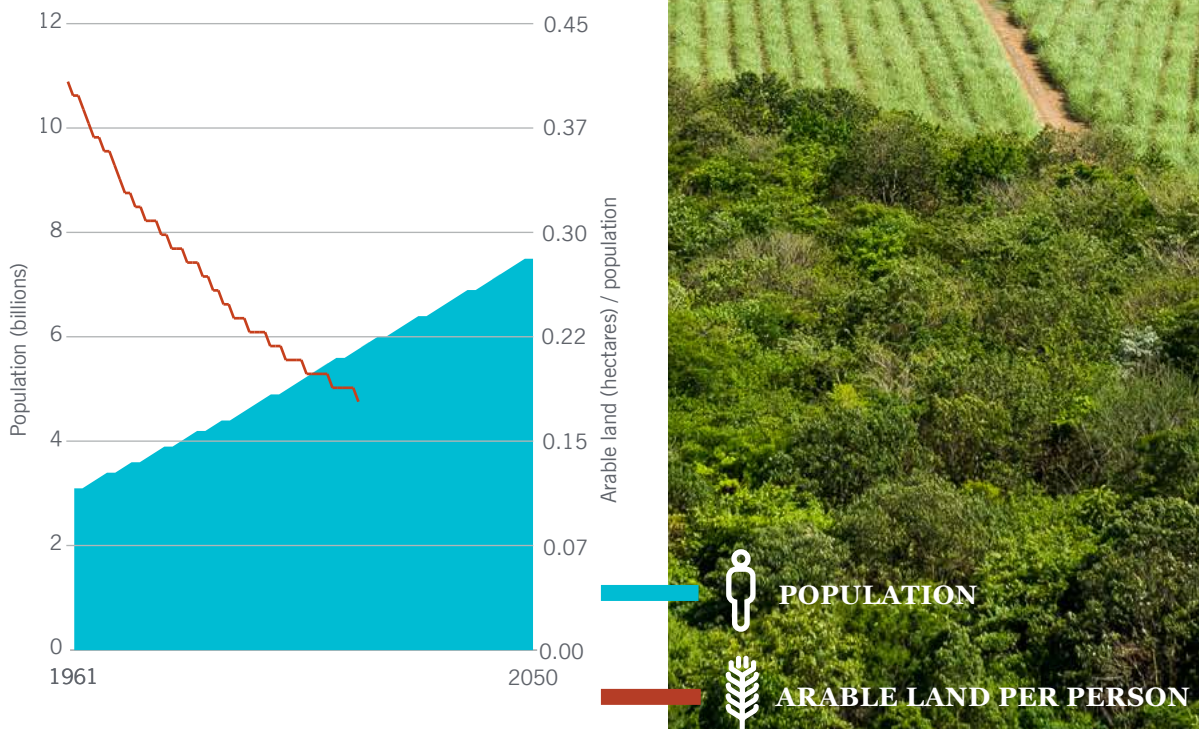
The developing world has a growing middle class that will, as it becomes increasingly prosperous, consume greater quantities of protein. The Organization for Economic Co-operation and Development (OECD) estimates that consumption of major meat proteins (beef and veal, pork, poultry and lamb) in developing countries will increase by 12.6% through 2032.<sup>4</sup> Producing a single pound of beef protein requires approximately ten pounds of feed grain, thus a shift toward greater global protein consumption will increase demand for grain dramatically.

## U.S. poised to benefit from demand increase

The U.S. is a top global producer of many core agricultural crops such as corn and protein-rich foods such as beef, poultry and almonds. In addition to being one of the largest crop producers globally, the U.S. achieves very high levels of productivity allowing crops to be relatively cost-efficient and competitive on the global stage.<sup>3</sup> We believe these factors make the U.S. well-positioned to capture incremental growth in demand for grain and protein.

*In the face of continuing population growth and limited land base, farms globally must continue to do more with the same resources.*

**Projected population growth and declining arable land per person (1961–2050)**



Sources: Food and Agriculture Organization of the United Nations (FAOSTAT) 2023 and International Database: World Population Estimates and Projections, United States Census Bureau, November 2024.





*Together, these factors may drive increased values for agricultural land and create opportunities for investors in farmland.*

**PROJECTED  
COMPOUND  
ANNUAL  
GROWTH  
RATE (CAGR)  
(2023–2032)**



**World  
population  
(2020–2030)**

**0.9%**



**Wheat  
yield gains**

**0.3%**



**Corn  
yield gains**

**0.6%**



**Soybean  
yield gains**

**0.9%**

Sources: World Population: United Nations Population Division, 2020  
Crops: Organisation for Economic Co-operation and Development (OECD) 2023 and the Food and Agriculture Organization (FAO) 2023

OPINION PIECE. PLEASE SEE IMPORTANT DISCLOSURES IN THE ENDNOTES.  
NOT FDIC-INSURED | NO BANK GUARANTEE | MAY LOSE VALUE

# The key benefits of investing in farmland

*For over three decades, investments in U.S. farmland have achieved attractive total returns relative to asset classes like stocks, bonds and real estate, while also providing strong diversification benefits and a hedge against inflation.*

A U.S. farmland portfolio may provide all of these advantages as well as providing investors with a strong store of wealth. Farmland investments have been shown to have less volatility than broader financial markets and demonstrate return resilience during periods of economic recession, often providing investors with “gold-like” correlation characteristics while still generating annual cash distributions.

## Historically strong return

Agricultural land, as measured by the U.S. NCREIF Farmland Index, has outperformed both domestic stocks and bonds on an annualized basis over the last three plus decades, providing both consistent income and capital appreciation.

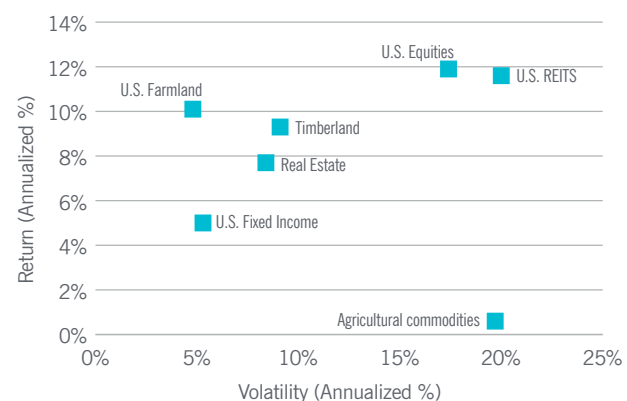
## U.S. farmland values

(Average price per acre of Illinois, USA farmland)

**\$1,469**  **\$9,550**  
*per acre in 1990* *per acre in 2024*

Source: TIAA Center for Farmland Research, 2024.

## Annual return vs. volatility (1992–2024)



Past performance is no guarantee of future results.

Sources: TIAA-CREF Center for Farmland Research, NCREIF, Bloomberg, Federal Reserve Bank of St. Louis. Asset classes represent the following indexes: U.S. Equities – Russell 3000 Index; U.S. Fixed Income – Bloomberg U.S. Aggregate Bond Index; U.S. REITs – 1992 to March 2006 NAREIT U.S. Real Estate Index Series and March 2006 on FTSE NAREIT US Real Estate Index Series; Real Estate – NCREIF Property Index; U.S. Farmland – NCREIF Farmland Index; U.S. Timberland – NCREIF Timberland Index; Agricultural commodities – GSCI Agriculture Index.

It is not possible to invest in an index. Performance for indices does not reflect investment fees or transactions costs.



### Asset return characteristics (1970–2024)

	Annual avg. return	Standard deviation
CPI	3.9%	2.8%
Gold	7.9%	21.7%
10-year treasury	6.7%	9.7%
NSDAQ Composite	10.9%	25.4%
S&P 500	7.6%	16.7%
U.S. Farmland	10.4%	6.8%

Past performance is no guarantee of future results.

Sources: TIAA Center for Farmland Research, Consumer Price Index, Commodity Research Bureau, Federal Reserve, Standard & Poor's, NASDAQ.

It is not possible to invest in an index. Performance for indices does not reflect investment fees or transactions costs.

### Attractive risk-return characteristics

When measured on a risk-return basis, farmland compares favorably to other asset classes, demonstrating strong returns per unit of risk. Farmland investments provide resiliency through rising interest rate environments and has exhibited positive performance through every period of increasing interest rates.<sup>5</sup>

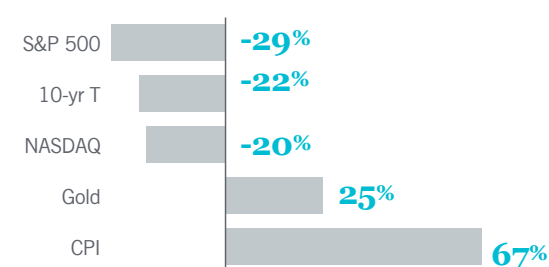
### Diversification potential

Over time, agricultural investment performance has moved in different cycles from traditional asset classes such as stocks and bonds; as a result, adding farmland to a portfolio enhances diversification and can result in lower volatility. Over the past 40 plus years, agricultural land has demonstrated a low correlation to both stock and bond indexes.<sup>7</sup> The U.S. provides farmland investors with a strong investment opportunity set providing ample crop type and geographic diversification. Farmland investors can also gain exposure to different tenant bases, sizes of farmland, proximity to off-takes, and different transaction markets. This helps create resiliency within a farmland investment portfolio and reduces a portfolio's concentration to any one region or crop type contributing to more consistent returns over a long-term hold period.

### Inflation hedging qualities

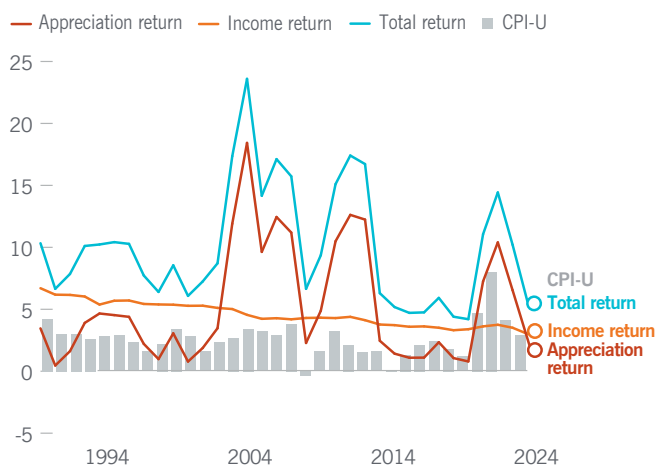
Historical farmland returns have outpaced inflation in a variety of market environments.<sup>6</sup> The NCREIF Farmland Index's Total Return has consistently provided returns more than double the inflation rate since 1991, as the chart below shows.

### Correlation of select assets vs. average U.S. farmland (1970–2024)



Source: TIAA Center for Farmland Research, Standard & Poor's, Federal Reserve, Commodity Research Bureau, Consumer Price Index.

### NCREIF farmland returns vs. inflation (% in 1991–2024)



Past performance is no guarantee of future results.

Sources: NCREIF Farmland Index and the Consumer Price Index – Urban.

The inception date of the NCREIF Farmland Index is 4Q 1990. The CPI-U produces monthly data on changes in the prices paid by urban consumers for a representative basket of goods and services since 1913. NCREIF Farmland Index returns are used for the time frame above to demonstrate income and capital appreciation components, which are not available from the TIAA-CREF Center for Farmland Research database.

# How to invest in farmland

*With strong fundamentals and historically attractive risk and return characteristics, we believe investments in agricultural land are increasingly compelling for investors.<sup>8</sup> Still, gaining exposure to this asset class requires an understanding of certain basic characteristics and structures. This section discusses some of the most important factors to consider in developing a farmland investment strategy.*

## **Diversifying a U.S. Farmland portfolio**

Achieving more steady returns in a farmland portfolio requires a focus on diversification. The U.S. provides a unique landscape with plenty of opportunities to adequately diversify a farmland portfolio. The NCREIF farmland index defines 12 key farmland investment regions in the U.S. These regions provide investors with exposure to unique climates which impact crop production and determine what types of crops can be grown most profitably. Regions like the corn belt (covering Illinois, Indiana, Iowa, Missouri, and Ohio) grow a relatively narrow crop mix of corn and soybeans; however, these crops grow at a very efficient pace, boasting some of the most productive farmland in the world.<sup>3</sup> Other regions, like the Pacific west (California) have several different growing climates making the region optimal for growing berries, nuts, wine grapes, and tree fruit. Building a portfolio that has exposure to various regions allows a farmland investor to benefit from trends in both crop mixes. Trends in various different crop mixes are often uncorrelated which can help support more consistent returns in a portfolio that has adequate diversification.

## Different types of agricultural assets

*Different types of agricultural investments, each with distinctive risk and return characteristics, can further diversify a portfolio.*



### ROW CROPS

These crops are planted and harvested annually and include **grains and oilseeds such as corn, soybeans and wheat.**

Typically, row crop investments produce relatively steady income returns over time since planting decisions can be made annually. A number of row crops, such as corn, soybeans and sugarcane, are also used in the production of alternative fuels. Given their lower risk profile compared to permanent crops, row crops often serve as the core of a diversified portfolio.



### PERMANENT CROPS

Permanent crops, such as **wine grapes, tree nuts, citrus, apples and avocados,** have a long lifespan, typically 25 years or more. They mature three to seven years after planting, so there is usually a lag between investment and realization of returns. Roughly 40% to 70% of the value of the investment is above the ground in the form of a tree or vine that makes replanting annually cost-prohibitive. These crops historically have delivered higher average income returns than row crops, but they also have experienced higher volatility on a year-to-year basis.



### AGRICULTURAL INFRASTRUCTURE

Infrastructure like **on-farm processing/storage** provides tenants with additional flexibility, reducing selling pressure and allowing growers the ability to hold and market crops when pricing is more favorable. On-farm infrastructure offers a compliment to existing farmland investments as it improves the rental desirability of the land while offering accretive returns relative to conventional farmland rental rates. High quality on-farm infrastructure is sought after by farmers and can provide attractive income returns. Infrastructure can have a finite useful life but the rental rates for this type of infrastructure result in strong total returns.



**Direct farmland investments vs. commodity futures**

Historically, investors have often gained investment exposure to the agricultural asset class via commodity futures markets. Although commodity futures are highly liquid and readily investible, they can also be extremely volatile, with prices driven by short-term market movements and sentiment.

Moreover, by purchasing commodity futures, investors participate only in the appreciation potential of that specific commodity and not in the increase in the value of the land where it was grown, or the added value that can come from investments in agricultural infrastructure. By purchasing farmland, investors gain access to the key factor of production that is most closely tied to the fundamental factors supporting the investment thesis. Direct investments in land are less liquid than commodity investments but offer investors the chance to benefit from long-term appreciation trends in farmland.

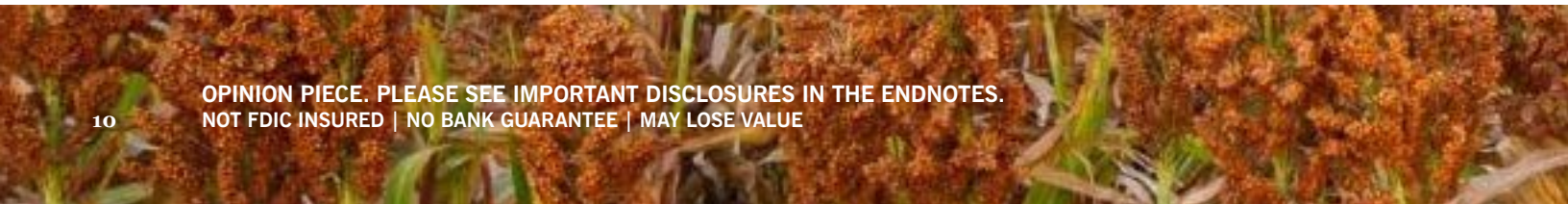
As discussed, farmland is a key factor in the production of food. As the demand for food rises and the supply of arable land declines due to increased industrialization and development, owners of high-quality farmland are positioned to benefit for years to come.

*Important differences between the two approaches:*

	<b>Farmland</b>	<b>Commodities</b>
Liquidity	Often illiquid	Can be traded in real time
Volatility	Low	Very high
Primary drivers of return	Potentially intrinsic value of land; longterm global food supply and demand, capital appreciation	Short-term trading arbitrage <sup>1</sup>
Holding period	Typically multiple years	Unrestricted—from minutes to years
Ability to participate in long-term appreciation of farmland	Yes	No
Ability to improve value of owned assets through infrastructure development	Yes	No
Potentially steady income	Yes	No
Inflation hedge	Yes	Yes

As an asset class, agricultural investments are less developed, more illiquid, and less transparent compared to traditional asset classes. Agricultural investments will be subject to risks generally associated with the ownership of real estate-related assets, including changes in economic conditions, environmental risks, the cost of and ability to obtain insurance, and risks related to leasing of properties.

<sup>1</sup> Commodity futures can be used to speculate on longer term trends both on the upside and downside.





## Understanding operating strategies

*Four primary operating strategies can be utilized for direct farmland investments, each having distinct risk/return implications.*

# 1

### CASH LEASE/CASH FLEX

A basic cash lease is structured on a one- to three-year basis at a fixed dollar amount per acre. The tenant pays the lease up front and keeps any profit above the lease amount. In a cash flex structure, the tenant pays lower cash rent, but gives up a portion of the upside of crop production based on commodity pricing during the crop year. In both structures, the tenant is expected to maintain the quality of the property during the lease term.

# 2

### SHARE LEASE

In a share lease, the investor and tenant each provide a share of the inputs to produce the crops. The investor and tenant then share the crops produced or the revenue from the crop production, and the investor typically receives a “preferred return” for providing the land.

# 3

### CUSTOM FARMING

In this structure, the investor selects an operator who will farm the land and provide the necessary inputs, man-power and machinery. The investor takes all the risk and reward of crop production while making minimal direct capital investments in farmland equipment and personnel.

# 4

### DIRECT FARMING

Here, the investor operates the property directly, providing the machinery, personnel and crop inputs needed. This structure offers the best return potential to the investor, but also the highest degree of risk.

## Managing risk in agricultural investment

As an asset class, farmland is less developed, more illiquid and more inefficient compared to traditional asset classes. Many deals take place off-market, making reputation and local market knowledge vitally important in accessing and closing transactions.

For all these reasons, it is critical to manage risk carefully, through diversification by geography, crop type and tenant concentration. In addition, seasoned investors can mitigate risk by developing in-depth knowledge of local conditions and strong relationships with local partners as well as a broad understanding of the factors that influence agricultural production and marketing. Furthermore, investors need to have robust compliance and oversight capabilities in order to address environmental issues, legal, accounting and control requirements and labor practices, among other factors. Management experience and relationships are key differentials in developing, managing and executing a successful farmland investment portfolio.

From a broader portfolio perspective, investors should understand that though agricultural investments on the whole have a low historical performance correlation to traditional asset classes, these correlations might collapse during broad market downturns and significantly limit the diversification benefits of any one asset class, including agricultural investments.



# An asset class for investors

*Interest among wealth investors in U.S. farmland portfolios is growing, given the asset class's strong fundamentals, risk-adjusted returns, and resiliency during periods of economic volatility.*

Farmland investing typically falls within the alternative asset category, but farmland is a unique asset class even within this classification. Agricultural land offers a steady cash income stream. Since there is a finite supply of global farmland and growing demand for food, these assets seem likely to appreciate even more strongly in the years to come.

Designing and building farmland portfolios requires significant involvement on the part of the portfolio manager in developing agricultural assets to their full potential. It requires both macro insights into worldwide trends in food supply and demand, as well as an understanding of specific local markets and conditions. Finally, farmland is a long-term investment in which positions often cannot be traded readily and where returns may take several years to materialize. Based on the complexity involved, investors seeking exposure to farmland should take care in selecting an experienced investment manager with a track record for success investing in agricultural properties.

Nuveen is the global asset management arm of TIAA, managing \$1.3 trillion in assets<sup>1</sup> for over 1,300 institutional clients in 32 countries<sup>2</sup> worldwide, across fixed income, equities, alternatives and solutions based strategies.

Nuveen Natural Capital is a land-focused investment manager. We provide investors access to global farmland, global timberland, and nature-based solutions, with \$13.1 billion of assets under management across diverse geographies, crop and tree species, operating strategies and environmental markets such as carbon and mitigation banking.

With over 39 years of investment experience and more than 175 employees globally, the platform offers extensive geographic reach combined with deep sector expertise.<sup>3</sup>

1 As of 31 Mar 2025. Nuveen assets under management (AUM) is inclusive of underlying investment specialists. 2 As of 31 Dec 2023; updated annually. 3 NNC data is as of 31 Dec 2024, AUM reflective of fair market value for farmland and invested capital for timberland. 46 NNC employees sit within the Brazil Radar JV and are not included in these figures.

**For more information about investing in farmland, visit us at [nuveen.com/naturalcapital](https://nuveen.com/naturalcapital).**

#### Endnotes

- 1 International Database: World Population Estimates and Projections, United States Census Bureau, November 2024.
- 2 Agnew, J. & Hendery, S. (2023). T. Thompson (Ed.) 2023 Global Agricultural Productivity Report: Every Farmer, Every Tool. Virginia Tech College of Agriculture and Life Sciences.
- 3 Agricultural Productivity in the United States and U.S. Agricultural Trade, U.S. Department of Agriculture, Economic Research Service, May 2025.
- 4 OECD/FAO (2023), OECD-FAO Agricultural Outlook 2023-2032, OECD Publishing, Paris
- 5 How do rising interest rates affect natural capital investments? Nuveen Research, June 2023.
- 6 Inflation hedging ability of natural capital investments, Nuveen Research, November, 2022.
- 7 The power of private real assets. Nuveen Research, January 2022.
- 8 Building resilient natural capital portfolios through diversification. Nuveen Research, October 2023

#### Risks and other important considerations

This material, along with any views and opinions expressed within, are presented for informational and educational purposes only as of the date of production/writing and may change without notice at any time based on numerous factors, such as changing market, economic, political, or other conditions, legal and regulatory developments, additional risks and uncertainties and may not come to pass. There is no promise, representation, or warranty (express or implied) as to the past, future, or current accuracy, reliability or completeness of, nor liability for, decisions based on such information, and it should not be relied on as such. This material should not be regarded by the recipients as a substitute for the exercise of their own judgment. It is important to review your investment objectives, risk tolerance and liquidity needs before choosing an investment style or manager.

This material is not intended to be a recommendation or investment advice, does not constitute a solicitation to buy, sell or hold a security or investment strategy and is not provided in a fiduciary capacity. The information provided does not take into account the specific objectives or circumstances of any particular investor, or suggest any specific course of action. Investment decisions should be made based on an investor's objectives and circumstances and in consultation with their financial advisors. Financial professionals should independently evaluate the risks associated with products or services and exercise independent judgment with respect to their clients.

This material may contain "forward-looking" information that is not purely historical in nature. Such information may include, among other things, projections, forecasts, estimates of yields and/or market returns, and proposed or expected portfolio composition. Moreover, certain historical performance information of other investment vehicles or composite accounts managed by Nuveen may be included in this material and such performance information is presented by way of example only. No representation is made that the performance presented will be achieved, or that every assumption made in achieving, calculating or presenting either the forward-looking information or the historical performance information herein has been considered or stated in preparing this material. Economic and market forecasts are subject to uncertainty and may change based on varying market conditions, political and economic developments. Any changes to assumptions that may have been made in preparing this material could have a material impact on any of the data and/or information presented herein by way of example. Certain products and services may not be available to all entities or persons.

#### Important information on risk

**Past performance is no guarantee of future results. All investments carry a certain degree of risk, including the possible loss of principal, and there is no assurance that an investment will provide positive performance over any period of time. Certain products and services may not be available to all entities or persons. There is no guarantee that investment objectives will be achieved.**

Investors should be aware that alternative investments are speculative, subject to substantial risks including the risks associated with limited liquidity, the potential use of leverage, potential short sales, currency exchange rates, and concentrated investments and may involve complex tax structures and investment strategies. Alternative investments may be illiquid, there may be no liquid secondary market or ready purchasers for such securities, they may not be required to provide periodic pricing or valuation information to investors, there may be delays in distributing tax information to investors, they are not subject to the same regulatory requirements as other types of pooled investment vehicles, and they may be subject to high fees and expenses, which will reduce profits.

As an asset class, agricultural investments are less developed, more illiquid, and less transparent compared to traditional asset classes. Agricultural investments will be subject to risks generally associated with the ownership of real estate-related assets, including changes in economic conditions, environmental risks, the cost of and ability to obtain insurance, and risks related to leasing of properties.

This material does not constitute a solicitation of an offer to buy, or an offer to sell securities in any jurisdiction in which such solicitation is unlawful or to any person to whom it is unlawful to make such an offer. Moreover, it neither constitutes an offer to enter into an investment agreement with the recipient of this document nor an invitation to respond to it by making an offer to enter into an investment agreement.

Diversification does not assure a profit or protect against loss

This information does not constitute investment research, as defined under MiFID.

Nuveen, LLC provides investment solutions through its investment specialist.

©2025 Nuveen, LLC. All rights reserved.

**OPINION PIECE. PLEASE SEE IMPORTANT DISCLOSURES IN THE ENDNOTES.  
NOT FDIC INSURED | NO BANK GUARANTEE | MAY LOSE VALUE**

**nuveen**  
NATURAL CAPITAL